



GOLDEN BAY

\$490,000*

HOUSE & LAND PACKAGE



*Price is subject to change and availability.

The Hamptons by B1 Homes - Lot 1621 by B1 Homes

4  2  2  Home Size: 190.12sqm

Lot 1621 TBA (582sqm)

Here at Golden Bay you will be spoilt for choice! Whether you are looking for a lower maintenance block or extra space for your growing family, we have a range of blocks and house and land packages to suit every lifestyle.

Your dream location requires your dream home, B1 Homes presents The Hamptons, a spacious 4 bedroom home specifically designed to suit this unique block.

For your very own tour of our community, or if you have any questions, simply get in touch with our Sales Representative, Mila Oxana.

*Images are for illustrative purposes only

HOUSE FEATURES

- Theatre room
- Living and alfresco overlooking parkland
- His and Hers robes to master suite
- Plenty of parking
- 9 month build guarantee
- 25 year structural warranty

B1
HOMES

For further information please call **Mila Oxana on 0428 053 186** or visit our Sales and Information Centre at **4 Glenburgh Drive, Golden Bay**

[Home](#)



GOLDEN BAY

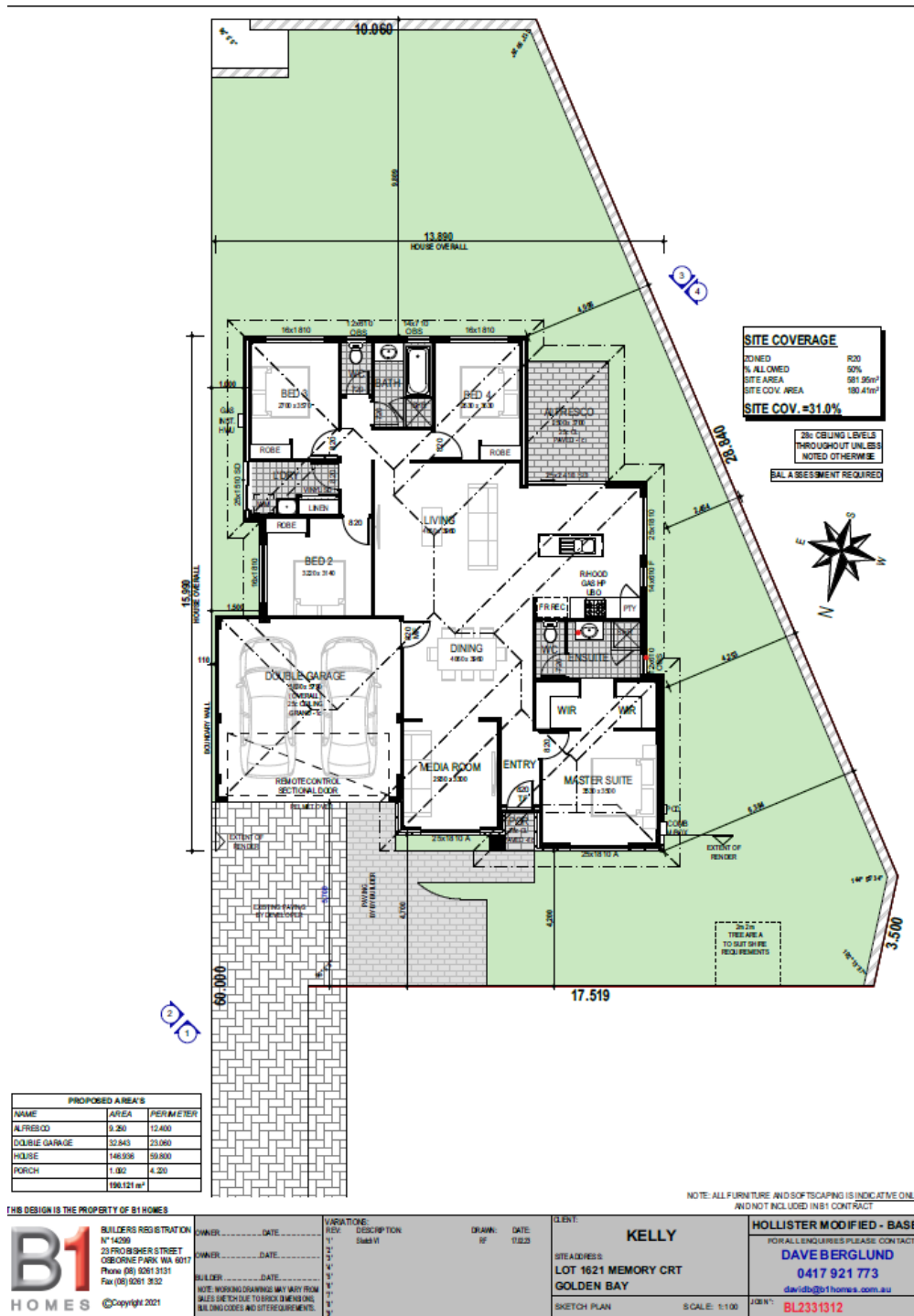
\$490,000*

HOUSE & LAND PACKAGE

The Hamptons by B1 Homes - Lot 1621 by B1 Homes

Home Size: 190.12sqm

Lot Size: 582sqm



*House and land sold separately. The entity holding a real estate licence which has been appointed by Peet Limited ABN 56 008 665 834 or a subsidiary of it to sell land within the applicable State or Territory acts as agent for the sale of the land only. Buyers must enter into a separate contract with the builder, and the builder is responsible for all matters relating to the building contract and the house. Prices shown may include rebates for the fulfilment of separate conditions under the land contract, and information provided by the builder may be subject to eligibility criteria and other terms and conditions. Buyers should review each of the land and building contracts carefully and make their own enquiries. It is recommended that buyers obtain independent advice before proceeding. Illustrations and information are intended to be indicative only and are believed to be correct at the time of publication. Peet Limited ABN 56 008 665 834 reserves the right to withdraw or alter any package at any time without notice at its absolute discretion. Estimated costs for the package are indicative only and other costs and fees are payable, including but not limited to: transfer (also known as stamp) duty, settlement/registration fees, legal/conveyancing fees, finance costs, site works, engagement of any consultants, approvals, connection for services and variations. Prices and lot information correct as at 08/06/2023.